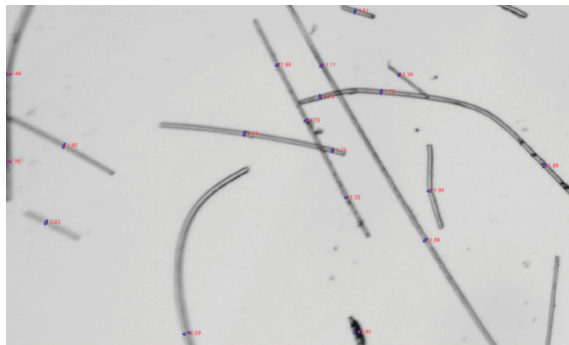


Fiber Thickness Analysis

For BSE/SE SEM and Light Microscopy Images

Consistently measure fiber thickness and orientation with backscattered electron, secondary electron or light microscopy images using the Image-Pro Fiber Thickness APP.

The APP includes a simple user interface which guides the user in measuring fiber thickness in automatic or manual modes as required.



Simplification

The simple, user-friendly Fiber Thickness APP requires less training time and reduces training costs.

Reproducibility

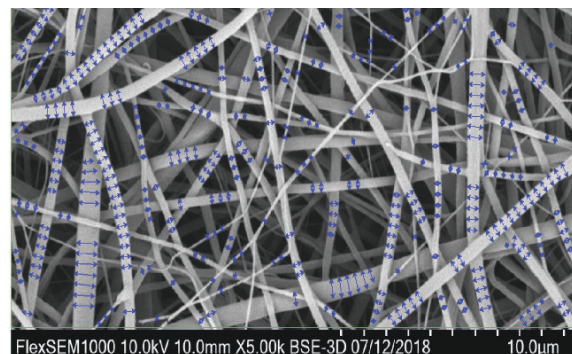
Decrease the likelihood of errors or bias between various image sets and operators by applying the Fiber Thickness APP's standardized workflow for analysis.

Batch Processing

Analyzing images to generate results can be time consuming. Save time by speeding up your analysis of multiple image sets with a single click.

Editing

For complex and challenging samples, a suite of editing tools is available to accurately measure fiber thickness.



FOR MORE INFORMATION:

Visit our website at www.mediacy.com or call us:
Americas/Europe +1 301 495 3305 | Asia +65 6408 6245